

CAPITAL CAMPAIGN
SETTING THE STAGE
FOR GOOD

THINK THRICE: ONE ARTFUL GIFT, THREE WORTHY CAUSES

MARIN
SHAKESPEARE
COMPANY



On Stage. Education. Social Justice. **ONE GIFT DRAMATICALLY BENEFITS ALL THREE**

At Marin Shakespeare Company, our mission extends far beyond that of a typical theatre company: we use great works of theatre as an inspiration for good works in our community and beyond. Many of our donors choose us because they know their gift enriches lives in three inspiring, impactful ways.

THREE WORTHY CAUSES

We believe that live, passionate Shakespearean theatre has the power to transform lives. Shakespeare reveals universal human truths, illuminating personal discovery, and inspiring excellence. With Shakespeare as our endless source of inspiration, we have become a vibrant engine of community engagement, education, and social change. Marin Shakespeare Company strives to create a lasting impact in three key areas: On Stage, Education, and Social Justice.

“We love helping to support the arts, strengthen the educational system, and inspire change for some of the most overlooked people in our society. When we see firsthand the power of Shakespeare for Social Justice, we know we are contributing to meaningful work that extends beyond prison walls.”

—Paul and Sandy Zuber

MARINSHAKESPEARE.ORG

MARIN
SHAKESPEARE
COMPANY

SPOTLIGHT ON AN INNOVATIVE CULTURAL INSTITUTION



ON STAGE

Marin is one of fewer than 150 communities in the nation to boast a professional Shakespeare theatre. In addition to casting seasoned Actors' Equity professionals, we offer local talent an opportunity to hone their Shakespearean acting skills. We are also pioneering the casting of formerly incarcerated actors in mainstage and other productions.



EDUCATION

We excel at getting young people excited about Shakespeare, providing arts education for students of all ages through classes, summer camps, student matinees, intern programs, and the unique Teen Touring Company. Our in-school programs focus on schools serving large numbers of low-income families.



SOCIAL JUSTICE

We are the nation's largest Shakespeare in Prison program, creating opportunities for deep personal and institutional transformation. We train future Teaching Artists in our groundbreaking, drama-therapy inspired techniques and share our prison-based performances and workshops with hundreds of visitors each year.

Our Capital Campaign: A PREVIEW OF OUR GREATEST PRODUCTION EVER



For years, Marin Shakespeare Company has been bursting at the seams. Beyond holding us back creatively, the spatial and technical constraints of our existing theatre and offices limit our ability to fulfill our ambitious educational and social justice agenda. Now, three pivotal developments have converged to create an exciting opportunity for growth:

- ◆ We secured a 25-year lease with Dominican University, allowing us to renovate the Forest Meadows Amphitheatre
- ◆ An inspired theatre patron gifted us with a two-million-dollar lead gift for capital improvements
- ◆ An ideal space for our permanent home came up for sale – the former Heller's for Children Store building at 514 Fourth Street in San Rafael, just five blocks from Forest Meadows

We can now envision a dual-site future with year-round opportunities for performances, classes, training, office space, community gatherings, and more groundbreaking work using Shakespeare as a tool for social change.



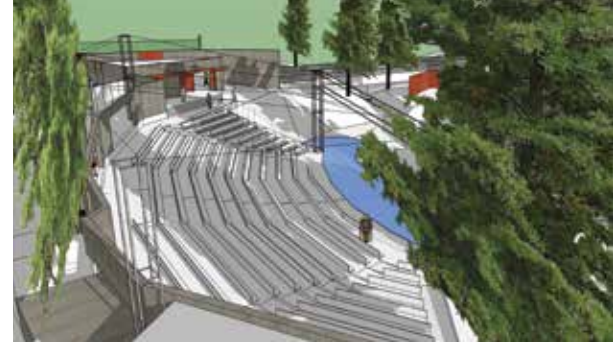
PHASE ONE: ACQUISITION OF NEW PROPERTY

We have purchased 514 Fourth Street. Prior to our planned renovation, we are using it for limited classes, meetings, and rentals.

PHASE TWO: FOREST MEADOWS AMPHITHEATRE RENOVATION

We look forward to creating a permanent theatrical infrastructure for the beloved 50-year-old Forest Meadows Amphitheatre. Some of the planned upgrades are required to legally comply with the Americans with Disabilities Act, while others will increase comfort and convenience for audience and actors. At the heart of this initiative is a commitment to preserving the theatre's rustic charm. Plans include:

- ◆ Mobility ramps for ADA access
- ◆ Retractable shade awning for matinees
- ◆ A new entry building for tickets and concessions
- ◆ A new tech booth and permanent lighting towers
- ◆ Backstage upgrades, new dressing rooms, and storage
- ◆ Acoustical enhancements



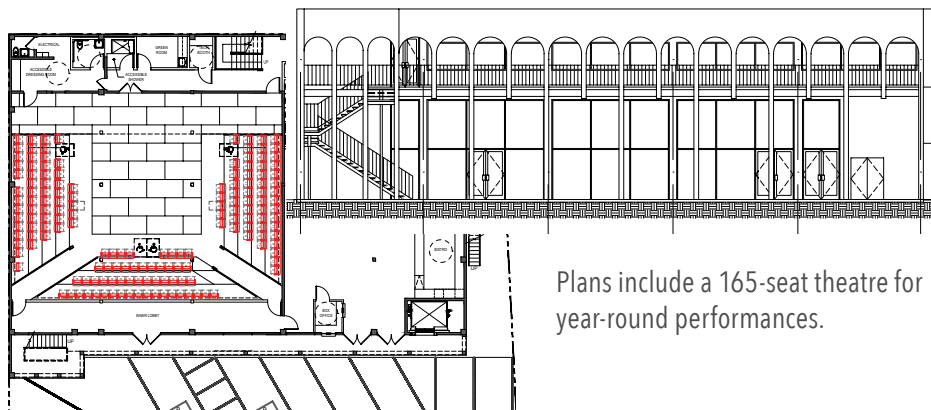
Artistic renderings of
the new, improved amphitheatre,
ELS Architecture and Urban Design

A PERMANENT HOME FOR THE MARIN SHAKESPEARE COMPANY



PHASE THREE: 514 FOURTH STREET BUILDING RENOVATION

Our vision for the redesign of the new space is a vibrant performing arts center as exceptional as Marin itself. This versatile space will allow us to extend our performance season, offer more education programs, train more Teaching Artists in our innovative Shakespeare for Social Justice work, and house the administrative infrastructure needed to grow and manage our Education and Social Justice endeavors. The building is located just five blocks from the Forest Meadows Amphitheatre, in a part of San Rafael that is ripe for a revival.



Plans include a 165-seat theatre for year-round performances.

“We know what we are, but know not what we may be.” —*Hamlet*

DESIGN DETAILS

We have hired the architectural firm of John Fisher & Associates, specialists in theatre and acoustical design, for these key renovations:

- ◆ A 165-seat theatre, complete with dressing rooms, green room, tech booth, and lighting grid
- ◆ A lobby/cabaret/café with seating for intimate performances
- ◆ Three classrooms
- ◆ Administrative offices for our On Stage, Education, and Social Justice teams
- ◆ Theatrical storage for costumes, props, and sets

We look forward to beginning construction as soon as funding is secured.



Timeless, Thought-provoking Plays



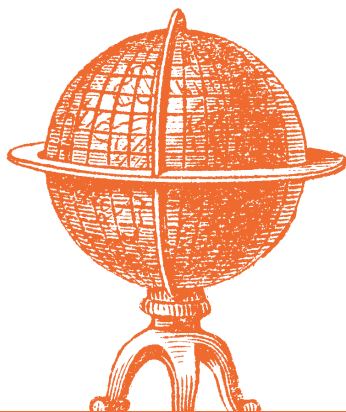
Onstage work is the foundation of our company, drawing fans from our local community and beyond, and inspiring all we do since our founding in 1989. Professional productions give theatre artists opportunities to share and explore stories, characters, passions, and ideas with audiences of all ages. Founding Directors Robert Currier and Lesley Schisgall Currier have evolved the company into one of the Bay Area's foremost cultural assets. A beloved summer-time tradition, our productions engage, entertain, and enlighten more than 10,000 people each year. We have garnered almost 200 awards and nominations for artistic excellence.



“The play’s the thing.” –*Hamlet*

We look forward to performing year-round when we raise the curtain on our new indoor theatre at 514 Fourth Street. We will be able to expand our repertoire to include:

- ◆ Intimate Shakespeare and classical productions
- ◆ New plays, play readings, and workshop productions
- ◆ Performances and events that explore social justice issues
- ◆ Returned Citizens Theatre Troupe performances
- ◆ Solo shows, community storytelling, booked-in events
- ◆ Student performances
- ◆ Community gatherings
- ◆ And much more!



Learning Through Play



Arts Education Programs develop future generations of confident, creative, empathetic citizens. Marin Shakespeare Company offers year-round arts education opportunities in schools and through after-school and summer programs. Our Teaching Artists introduce Shakespeare and Creative Dramatics to low-income and at-risk youth from kindergarten on up. Creative play helps children develop social intelligence, public speaking skills, love of language and history, teamwork, and creativity. New classroom space at 514 Fourth Street will allow for expanded programming for youth and adults.



BENEFITS OF ARTS EDUCATION

Only 4% of public elementary schools in the United States offer performing arts instruction.

Our programs help prepare Bay Area youth for success.

21st-century jobs require key abilities, including creativity, the ability to work as part of an ensemble, and communication skills. Our programs help young people develop a collaborative, creative work style.

Studies show that students learn Shakespeare better, are more curious, and retain knowledge longer when given participatory, active, learning opportunities.

Our classroom instruction is based on proven best practices in teaching Shakespeare and inspiring students' love of language, history, and psychology.



“For all of us, even if we don’t understand every word, Shakespeare is about emotions, values, and self-awareness. It’s timeless.”

—Larry and Diane Rosenberger

Freeing Inmates to Play Their Best Roles



For incarcerated men and women, exposure to Shakespeare's psychological insight and poetic language can be inspiring, cathartic, and life changing. Our Shakespeare for Social Justice program inspires inmates to discover how to act as their best selves. As one inmate actor said to us, "I may not be a great actor but I have become a better man."



"My small parts in the wonderful productions put on by your company have stripped away the anger and hate I armored myself in."

—Az Ford, Actor, Shakespeare at San Quentin

SHAKESPEARE IN PRISON

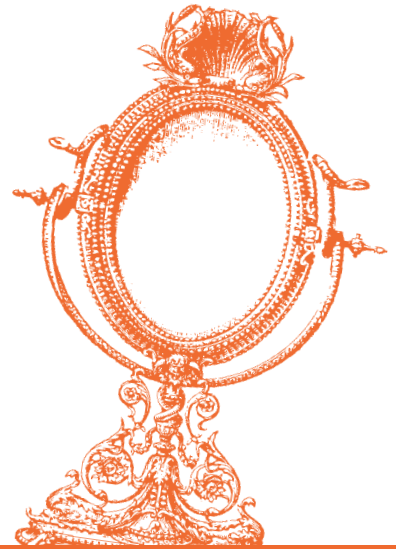
The United States has **5%** of the world's population and yet **25%** of its inmates. Our programs shine a light on the national shame of mass incarceration. In 2018, we worked with almost 400 inmates at 8 California state prisons who practiced self-reflection, creative expression, and teamwork through Shakespeare.

People of color and low economic status are far more likely to be incarcerated in the U.S. Our programs give inmates of all backgrounds a platform for sharing their intelligence, creativity, and humanity.

95% of inmates will one day return to society.

We envision our future neighbors and fellow citizens returning with the communication skills and emotional intelligence to succeed and lead.

We are just beginning to discover the possibilities for using this revolutionary work for good in communities inside and outside of prisons..



“It is not in our stars, but in ourselves.” —Julius Caesar

“To be or not to be? That is the question.”

YOU ARE THE ANSWER



Whether you are a patron of the arts, a supporter of social justice, or a champion of education, we hope you will consider supporting our work. Marin Shakespeare Company needs your enthusiasm and your help. This is a once-in-a-lifetime opportunity to ensure the future of an extraordinarily innovative and impactful theatre company that is not only playing onstage but also playing a key role in transforming lives well beyond our theatre.

Please inquire about specific giving levels and benefits and how you might play a key role in our growth. For more information, contact Lesley Currier at 415-499-4485 or lesley@marinshakespeare.org.

“Action is eloquence.”

—*Coriolanus*



MARIN SHAKESPEARE COMPANY

ON STAGE ~ EDUCATION ~ SOCIAL JUSTICE

MARIN
SHAKESPEARE
COMPANY



CAPITAL CAMPAIGN
SETTING THE STAGE
FOR GOOD

MARINSHAKESPEARE.ORG

415-499-4485

