



MARIN  
SHAKESPEARE  
COMPANY

'23

# HAMLET

ADAPTED AND DIRECTED BY JON TRACY

JUNE 16 - JULY 16



# TWELFTH NIGHT

ADAPTED AND DIRECTED BY BRIDGETTE LORIAUX

AUG 4 - SEPT 3

FOREST MEADOWS AMPHITHEATRE AT  
DOMINICAN UNIVERSITY OF CALIFORNIA, SAN RAFAEL

415.499.4488

[www.marinshakespeare.org](http://www.marinshakespeare.org)





## **WE ARE MARIN SHAKESPEARE COMPANY**

**We believe that Shakespeare has the power to transform lives. Whether mind-opening, hilarious, or shattering, Shakespeare shines a light on the universal human themes deep within us all - revealing truths, inspiring excellence, and illuminating personal discovery.**

**With Shakespeare as our source of endless inspiration, we are a vibrant engine of community engagement, education, and social justice - equally vital on the stage, in classrooms, in prisons, and in the fresh air of the Forest Meadows Amphitheatre.**

**With the opening of our new Center for Performing Arts, Education, and Social Justice at 514 Fourth Street in downtown San Rafael, we are Setting the Stage for a shining future, with new ways to share important stories, empower new voices, and bring the community together in celebration, enjoyment, and discovery.**

**Thank you for joining the journey!**

**TOGETHER, WE'RE PLAYING FOR GOOD**

## LAND ACKNOWLEDGEMENT

The land on which the Forest Meadows Amphitheatre and Marin Shakespeare Company's Center for Performing Arts, Education and Social Justice at 514 Fourth Street sit is the unceded ancestral home of the Coast Miwok people.

The Conlan Recreation Center parking lot at Dominican University sits on the site of a former major Miwok village community which the U.S. Geological Survey calls MRN-254.

Artifacts including large projectile points, other tools, pipes, jewelry, mortar and pestles, and human remains have been found on this site. Archeological evidence suggests Forest Meadows was a place of sustained occupation for thousands of years with semi-permanent dwellings and diverse cultural activities.

We encourage you to learn more about the history of this land, and to support the present and future of the Coast Miwok people:

[Coast Miwok Tribal Council of Marin](#)

[Marin Coast Miwok - Monument Project](#)

[Federated Indians of Graton Rancheria, Rohnert Park](#)

[Museum of the American Indian, Novato](#)



## **A MESSAGE FROM MANAGING DIRECTOR, LESLEY CURRIER**

**Wow! It's been a long few years since we last produced here at Forest Meadows. We've completed major renovations, built a brand new indoor theatre, hired new staff, and rededicated ourselves to "Playing for Good". There's so much going on from events at the 514 Fourth Street theatre, to Kaleidoscope Talks at Forest Meadows – thanks for being here to share it all. We couldn't do it without you!**

## **A MESSAGE FROM BOARD CHAIR, ANDY GORDON**

**Marin Shakespeare Company proudly welcomes all of you to the newly renovated Forest Meadows Amphitheater where we will be presenting HAMLET and TWELFTH NIGHT this summer. Extensive renovations were completed during 2020 in order to enhance and improve accessibility, safety, acoustics, and comfort for the audience and the actors. The pandemic has presented challenges to us as it has to all theaters across the country. We have faced these challenges and are especially happy to be back and extremely proud to be able to offer you outstanding theatrical productions in the beauty of this outdoor theater.**

**During the past few years we also were able to construct an amazing new indoor theater located only a few blocks away at 514 4th Street in San Rafael. We will be presenting live theater and other cultural performances at this venue as well as using this space for classes, meetings, rehearsals, and special events consistent with our mission of promoting social change. We invite you to come visit us at our new Center for Performing Arts, Education, and Social Justice.**

**Warmly,**

**Andy Gordon  
Chair, Board of Directors  
Marin Shakespeare Company**



## **BOARD OF DIRECTORS**

**Andrew Gordon, Chair  
Marilee Eckert, Vice Chair  
Sheila McClear, Secretary  
Laurie Nardone, Treasurer**

**Ben August  
Anne Yumi Kobori  
Mark Kushner  
E. Craig Moody  
Lynn Oldham Robinett  
Sandy Zuber**

# HAMLET

ADAPTED AND DIRECTED BY JON TRACY

Friday, June 16 at 7:30 pm – Preview  
Saturday, June 17 – Opening Night  
Sunday, June 18 5:00 Senior Matinee  
Friday June 23 at 7:30 pm  
Saturday, June 24 at 7:30 pm  
Sunday, June 25, 5:00 Family Day  
Thursday, June 29 at 7:30 pm (Pay What You Will)  
Friday, June 30 at 7:30 pm  
Saturday, July 1 at 7:30 pm  
Sunday July 2 5:00 Matinee  
Thursday, July 6 at 7:30 pm  
Friday, July 7 at 7:30 pm  
Saturday, July 8 at 7:30 pm  
Sunday, July 9 5:00 Matinee  
Thursday, July 13 at 7:30 pm  
Friday, July 14 at 7:30 pm  
Saturday, July 15 at 7:30 pm  
Sunday, July 16 5:00 Matinee



# TWELFTH NIGHT

ADAPTED AND DIRECTED BY BRIDGETTE LORIAUX

Friday, August 4 at 7:30 pm – Preview  
Saturday, August 5 – Opening Night  
Sunday, August 6 5:00 Senior Matinee  
Friday August 11 at 7:30 pm  
Saturday, August 12 at 7:30 pm  
Sunday, August 13, 5:00 Family Day  
Thursday, August 17 at 7:30 pm Pay What You Will  
Friday August 18 at 7:30 pm  
Saturday, August 19 at 7:30 pm  
Sunday August 20 5:00 Matinee  
Thursday, August 24 at 7:30 pm  
Friday, August 25 at 7:30 pm  
Saturday, August 26 at 7:30 pm  
Sunday, August 27 5:00 Matinee  
Thursday, August 31 at 7:30 pm  
Friday, September 1 at 7:30 pm  
Saturday, September 2 at 7:30 pm  
Sunday, September 3 5:00 Matinee



## KALEIDOSCOPE TALKS

45 minutes before every performance, we will offer a free Kaleidoscope Talk led by a variety of speakers, including actors, directors, scholars, activists, and community members. Talks provide unique opportunities to learn more about the production through multiple perspectives, and audience members are welcome to visit these pre-shows as often as they like. Each talk will be its own entity - Shakespeare is "owned" by everyone, and everyone should have a chance to embrace, examine, critique, and perceive the plays on their own terms, through as many different gateways as we can offer. MSC's Kaleidoscope Talks aim to inspire conversation, debate, and reflection for all who walk through our gates.

### SCHEDULE OF KALEIDOSCOPE TALKS

## SPECIAL EVENTS AT 514 FOURTH STREET

"Hamlet" cast member Lady Zen, who joins us from San Miguel de Allende Mexico, will share their voice through two amazing events.

### "WHAT'S IN A NAME?"

Written, developed, and performed by Lady Zen, directed by Jon Tracy and designed by Sebastian Villan and Ben Euphrat, this hybrid, one-person play is based on true events in the life of entertainer and storyteller Lady Zen. A South American orphan is adopted by a missionary couple from Arkansas running a boarding school in Brazil. WHAT'S IN A NAME is a queer performing artist's journey of radical acceptance.

### "MOTHER OF MY VOICE"

Lady Zen's solo show honors the art of Lyric Fusion Poetics using images, story telling and fabulous singing to support a journey of humor, music, and poetry.

### PLAY READINGS, GRIOT THEATRE & MORE

Check out all the varied performances and events at 514 Fourth Street this summer!

### TICKETS & INFO HERE

## **BOX OFFICE AND SEATING**

The on-site Box Office and Amphitheater open one hour prior to performance. We allow picnicking inside the Amphitheater at that time. All seating is General Admission.

## **PARKING**

Free parking is available in two parking lots: 890 Belle Avenue, the nearest accessible parking; and the lot at Grand and Acacia Avenues outside the Conlan Recreation Center.

## **CONCESSIONS**

Guests are invited to purchase wine, beer, hot and cold drinks, and snacks at the concessions stand located inside the Amphitheatre near the Picnic Area. We also have MSC T-shirts and Shakespeare for Social Justice sweatshirts available for purchase. You are also welcome to bring your own food and beverages.

## **SEAT CUSHIONS**

Seat cushions are available for a \$1 rental fee. You are also welcome to bring your own cushions or blankets to the theater.

## **NO SMOKING OR PHOTOGRAPHY**

No smoking or photography of any kind is allowed in the theater. The video or audio recording of any performance by any means is strictly prohibited.

## **ELECTRONIC DEVICES**

Please turn off all electronic devices including cell phones, and watches.

## **"HAMLET" TRIGGER WARNING**

This production includes depictions of gun violence, mental and emotional trauma, drug use, and suicide.

# A NOTE FROM JON TRACY...

Artistic Producer of the Summer Season and Director, **HAMLET**



Jon works internationally as an art and culture producer for theatre and film. A director, playwright, designer, educator, and facilitator, he is the recipient of awards from the Kennedy Center Meritorious Achievement Award, North Bay Artys, Marquee Journalists, Ellys, Bay Area Theatre Critics Circle, and Theatre Bay Area, and has also been honored with the Solano College Theatre Alumni Award. He is a grant recipient from Theatre Bay Area, Shotgun Players' Bridging the Gap, SUI Generis, and the National Endowment for the Arts.

He recently completed a five-year leadership position with TheatreFIRST. He is also Co-Artistic Director of Groundswell: The International Theatre Intensive, a Company Member of both Shotgun Players and PlayGround, and the new Artistic Producer of the Summer Season for Marin Shakespeare Company. Jon is a proud member of SDC, the union for stage directors and choreographers, and the lucky Dad of Evelyn and Jacob. Visit his website at: [jontracyplays.com](http://jontracyplays.com)

## DIRECTOR'S NOTES:

We put a lot of stock in the impact of Shakespeare's works and the "mirror to nature" that they provide us. We champion these stories so that we might reflect and the best and worst of the human condition.

How best to deliver this impact NOW? Is it possible to find the 400+-year-old comedy in our modern moment? And what would it take to make this tragedy tragic again? What is the correct focus of this "mirror" to reflect our current "nature"?

The brilliant and beautiful creative team has developed a production of Hamlet that explores these questions through their own lived experiences. The play, an adaptation for sure, aims to bring us closer to its original force by pulling it up through the centuries, right up to our current moment.

May this production find its place in the massive library of viewpoints on Hamlet and serve as our distinct reflection on the past, present, and future of Shakespeare's relevance.



## HAMLET

By William Shakespeare  
Adapted and Directed by Jon Tracy+

## THE CAST

Rinabeth Apostol*	Laertes/Rosencrantz/ Clown Queen
Stevie DeMott	Horatio/Guildenstern
désirée freda	Ophelia
Bridgette Loriaux*	Gertrude
Nick Musleh*	Hamlet
Richard Pallaziol	Polonius
Michael Torres*	Claudius/Ghost of King Hamlet
Lady Zen	Clown King

## ARTISTIC TEAM

Choreographer	Bridgette Loriaux *
Costume Designers	Miyuki Bierlein, Luisa Frasconi
Dramaturg	Phillipa Kelley
Fight Captain	Stevie DeMott
Fight Director	Dave Maier
Lighting Designer	Jon Tracy
Producer	Lesley Currier
Properties Designer	Joy Gonzales
Set Designer	Nina Ball
Sound Designers & Composers	Ben Euphrat, Lady Zen
Stage Manager	Dawn Marie Kelley *
Stage Manager Assistant	Juliann Lathung
Understudy & Assistant Director	Storm White



\*Member, Actor's Equity Association, the professional association of actors and stage managers.

+Stage Directors and Choreographers Society

Marin Shakespeare company is proud to be affiliated with:

San Rafael Chamber of Commerce  
Theatre Bay Area  
Shakespeare Theatre Association



**THERE WILL BE ONE FIFTEEN-MINUTE INTERMISSION.**

**APPROXIMATE RUN TIME: 2 HOURS, 35 MINUTES**

## SPOILER ALERT: THE STORY OF HAMLET

Hamlet, the Prince, is home from college to mourn the death of his father, King Hamlet, who died two months earlier. Hamlet grapples with the realities of his newly widowed mother Queen Gertrude's marriage to his uncle, King Hamlet's brother, Claudius, who now has the throne.

A ghost appears to Hamlet's confidant, Horatio, who thinks the spirit has a likeness to the former King. In the midst of this revelation, the ghost appears and reveals that his brother Claudius poisoned him. Hamlet vows to avenge his father's murder. He decides to put on an antic disposition and feign madness.

Meanwhile, Laertes, daughter to the King's advisor Polonius, is set to return to France. Before she leaves, she tells Ophelia, her younger sister, to be weary of Hamlet's affections.

Hamlet's sanity begins to be questioned by all. Claudius and Gertrude are both concerned; Polonius suggests it is Ophelia's rejection of his advances. Claudius and Polonius decide to spy on Hamlet and Ophelia. Claudius further employs Rosencrantz and Guildenstern, two childhood friends of Hamlet, to spy on him further. Hamlet quickly realizes their intentions.

Hamlet utilizes a mysterious troupe of clowns to determine the validity of his father's murder. He will have them perform the very act of murder, killing a king through poison in the ear, which the ghost has claimed. He asks Horatio to watch Claudius' reaction throughout the play. While the court is watching, Claudius is enraged and leaves the play convincing Hamlet that he is the murderer.

Hamlet comes upon Claudius in the chapel, kneeling down to pray. He considers killing him but since Claudius is in mid-prayer, and will therefore go to heaven if he dies, Hamlet decides to wait until Claudius is committing some sin, so that he will go to hell like Hamlet's father before him.

Hamlet meets Gertrude in her room and an argument ensues. When he hears Polonius who is hiding shout for help, he shoots and kills him thinking it is Claudius. The ghost appears to Hamlet to refocus him on the task of killing Claudius.

Claudius demands that Hamlet, Rosencrantz and Guildenstern head for England. Claudius has sent a letter with them (backed up by a phone call) ordering Hamlet's execution during the trip. While at sea, however, Hamlet discovers his planned murder and switches the orders, causing Rosencrantz and Guildenstern to be executed.

Hamlet returns.

Meanwhile, Ophelia has gone mad with grief over her father's death. Laertes returns from France and learns it was Hamlet who has killed her father, Polonius. Claudius suggests that Laertes duel with Hamlet and poisons the tip of Laertes foil for a fatal blow. If Laertes loses the duel, Claudius will put poison into a drink for Hamlet. Gertrude enters and announces that Ophelia has drowned.

In the graveyard, Hamlet reminisces on a friend of his whose skull he has found. When the processional arrives with Ophelia's corpse, Laertes and Hamlet argue. A duel is scheduled...

**What's not to like about the court of Claudius? It's clean and bright, and no one is unemployed - except for Hamlet. No one is equivocal - except for Hamlet. And no one, it seems, is lonely - except for Hamlet. That is, until you turn your eyes toward Ophelia. This is one of the magical features of Marin Shakes' 2023 production: it asks us - demands of us - to consider what it's like to be Ophelia.**

**Returning for his father's funeral, Hamlet finds a court where his father's story has literally been buried with his body. King Claudius, dismissing his brother's fate with a single "drooping eye," asks Hamlet to accept the court's new normal, with its patina of health and decorum. But for Hamlet it's "a garden full of weeds:" and we watch as he turns this whole world, with everything it values, on its head. Alone in refusing Claudius' right to reign, Hamlet asks us, the audience, to join him in digging for the unsolved mysteries and untold stories of the soul. In many productions this leaves no room for Ophelia, who has her own thousand heartaches, her own unsolved mysteries. Marin Shakes' production uplifts Ophelia - who is she, and why does she let her lover destroy her?**

**In our production Ophelia has, instead of a brother, a sister whose freedom is pronounced in comparison with the restrictions forced upon Ophelia herself. Isolated and alone, recruited to others' dramas, in a profound sense she mirrors Hamlet's emotional journey. Yes, Hamlet's father has been murdered; but so has Ophelia's. Hamlet feels alone- but he does have Horatio, to whom, at his death, he entrusts his story. Ophelia has no one - not a mother, not a sister (since Laertes, her sister in this production, spends most of her time in France); not even a gentlewoman with whom to share her worries and sorrows. Horatio has insisted on coming to observe the rites of mourning with his friend. But Ophelia has no one with whom to mourn her father. Derided, mocked, gaslighted by her lover, she's told that he never loved her, and to "Get ... to a nunnery." On Ophelia's grave, her sister and her lover argue as to who loved her more and who misses her most. But where does this leave Ophelia? Ultimately takes the step, makes the choice that Hamlet cannot bring himself to make. And it's only in death that she's pressed to the bosoms of those who have abandoned her.**

**Abandonment and isolation are among the worst punishments that can be inflicted on a person: which is why communities create prisons, places on the periphery of life. Hamlet tells us that his uncle's court is "a prison." Trapped in rage and despair, denied "funeral rites," he's newly fathered by his uncle, and his mother is now also his aunt. But in this production Hamlet isn't the only creature crawling puzzled and alone "between earth and heaven" - Ophelia is as well. And Marin Shakes' Hamlet23 shines a special light on the story of a woman who, even as she's buried, is subject to the gravediggers' joking speculations about her right to buried within her community at all.**

**Isolation doesn't just hurt - it can literally kill. Ophelia shows us this.**



## Rinabeth Apostol\*

**Laertes/Rosencrantz/Clown Queen**

has appeared in new works onstage at American Conservatory Theater, Actors Theater of Louisville, Seattle Rep, TheatreWorks, CalShakes, The Magic, Arizona Theater Company, East West Players, Skirball Center for the Arts, and Berkeley Rep Ground Floor, among others. Post pandemic productions: **STARTING HERE, STARTING NOW** (SF Playhouse), **THE MAGIC LAMP** (Presidio Theater), **REDWINGED BLACKBIRD** (world premiere), **FUN HOME** (42nd Street Moon), **MONUMENT** (world premiere, Magic Theater), **SMART PEOPLE** and **THE CHINESE LADY** (CapStage) and **SOUTH PACIFIC** (Billings Symphony). Offstage, you can hear her on Sirius XM/Marvel's **UNBEATABLE SQUIRREL GIRL** Podcast as Gretchen Campbell. Proud member AEA, SAG-AFTRA. @rbdtwo | [rinabeth.com](http://rinabeth.com)



## Stevie DeMott

**Horatio/Guildenstern/Fight Captain**

is a devised theater maker, teacher, and actor. She has performed with the American Conservatory Theater, Magic Theatre, TheatreFirst, Word For Word, and Mugwumpin, among others. Favorite roles include May in **FOOL FOR LOVE**, Sara in **STOP KISS**, Orlando in Sarah Ruhl's **ORLANDO**, Lady Macbeth, and Mercutio. Stevie has taught for California Institute of Integral Studies, at Burning Man exploring devising theater under extreme conditions, and for A.C.T.'s YC and Studio programs. Later this season, she will be performing as Viola in MSC's production of **TWELFTH NIGHT**.



## désirée freda

**Ophelia**

(fka dezi solèy) is a multi-disciplinary storyteller & feminine guide devoted to embodiments of the Divine. when she's not on stage, she can be found communing with nature, creating beauty and holding space for transformative self-healing. désirée is co-founder of we are the new paradigm - a qwoc collective offering event curation, film production, quantum healing and ancestral based practices. you can learn more at [newparadigm.podia](http://newparadigm.podia) or on ig @musetothegods.



## Bridgette Loriaux\*

**Gertrude/Choreographer**

Credits include: four seasons at the Oregon Shakespeare Festival; NYC off-Broadway show and International Tour of **DE LA GUARDA**; Vocalist for **FUERZA BRUTA**; Tamam in Betty Shamieh's, **THE BLACK EYED**, Magic Theatre; Aerialist for the Beijing Olympic Games; Creator of **LA PETITE MORT** for Darb1718, Cairo, Egypt; Head of Production: Uneeq Entertainment, Dubai. TheatreFIRST, Anton's Well Theatre Company, SJSU, Shakespeare Santa Cruz at UCSC, and devised **BELOVÉD**, a one-woman physical theatre experience in Sao Paulo, Brazil. **2 1/2 BREATHS** a play she wrote, directed, and choreographed premiered off-Broadway on May 19, 2022 at the Chain Theatre NYC.



## Nick Musleh\*

### Hamlet

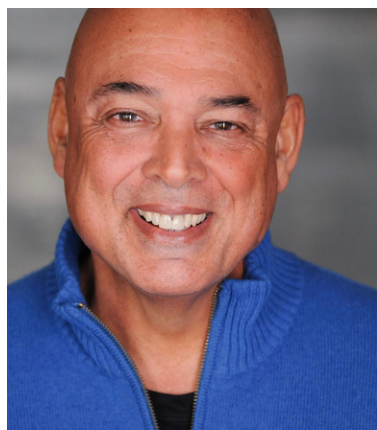
Nick is proud to reunite with Jon Tracy for his first production with this inspiring group at Marin Shakes. He served on the Artistic Board and as Shakespeare Workshop Moderator at Theatre West where he created roles in world premieres including **OUR MAN IN SANTIAGO**, which he premiered Off-Broadway, **MOOSE ON THE LOOSE**, and **AGAINST THE WALL**. He directs stage and film including the critically acclaimed **LOVE'S LABOUR'S LOST** and has several TV credits. He is writer/creator of **THE ROSY CROSS** series being developed in Europe, has performed in Shakespeare productions throughout the Bay and taught Shakespeare at UCLA and the Broad Stage.



## Richard Pallaziol

### Polonius

eagerly returns for his sixth season with MSC, embracing the opportunity to work with these incredible artists. Trained at CSU Long Beach and the American Conservatory Theatre in San Francisco, Richard's extensive experience as a retired professional stage fight choreographer, dancer, actor, and director spans over 400 productions. He takes immense pride in his current position as an actor and instructor with Valley Players in Napa, a remarkable theater company dedicated to empowering women over forty through the theatre arts.



## Michael Torres\*

### Claudius/Ghost of King Hamlet

played Caliban in Jon Tracy's adaptation of **THE TEMPEST** here at Marin Shakespeare a few years back. Also under Mr. Tracy's direction Michael played Agamemnon in his adaptation of **THE ILIAD**, **IN THE WOUND**, **THE SALT PLAYS**, **PART 1**. In 1996, he co-founded Campo Santo where he originated roles for Dave Eggers, Denis Johnson, Jose Rivera, Jessica Hagedorn, Octavio Solis and more. An award winning actor, Michael has played at The Aurora Theatre, The Shotgun Players, Berkeley Repertory, and TheatreFirst among others. During the pandemic he streamed for Playground **DISBELIEF: A CASSANDRA TALE**, and played Apollo and El Henry in Herbert Siguenza's **EL HENRY** for ARC.



## Lady Zen

### Clown King/Co-Composer

Alzenira Santos Amaral de Quezada is a Maestra of Fine Arts with a degree from Stonecoast MFA in Portland, Maine and a J. William Fulbright Scholar in Opera Performance from the University of Arkansas. A TEDx talk alumni, published author, producer, photographer and art director; currently a residence of Mexico collaborating on works around the world. Lady Zen will join Rene Armand for a North American Tour this fall and can be found in performing with their Royal Court Band in Mexico City, Queretaro, Guadalajara, Puerto Vallarta and San Miguel de Allende where they live with their spouse and three amazing cats. Check them out on Instagram @theladyzen.



## Nina Ball

### Scenic Design

Her work has been seen at American Conservatory Theatre, Oregon Shakespeare Festival, California Shakespeare Theater, Shotgun Players, Theatreworks, St Louis Rep, Seattle Rep, and San Francisco Playhouse, among many others. Ball also teaches scenic design at Stanford and is a member of IATSE local 829. [ninaball.com](http://ninaball.com)



## Jody Branham

### Costume Manager

brings a wealth of experience to the role. She cultivated her sewing skills as a teenager, creating costumes for Renaissance Faires, and later pursued a career in healthcare. However, her passion for theater led her to return to school, earning a degree in Drama and a master's degree in Theatre Arts and Costume Design. Jody has worked as a costume designer, design assistant, and seamstress for various regional, academic, and youth theater productions, as well as ballet. She excels in dramaturgical and visual research to create cohesive and immersive designs. Learn more at [JBranhamDesigns.com](http://JBranhamDesigns.com).



## Ben Euphrat

### Sound Design/Composer

is most often seen on the stage as an actor/musician, but is thrilled to make his sound design debut with MSC for Hamlet and the upcoming Tempest. He's worked either on stage or behind the scenes as a designer or music director with nearly every theatre in the Bay, including and most recently with SF Playhouse, Berkeley Rep, Marin Theatre Company, Shotgun Players, Magic Theatre, ACT, and Theatreworks, among others. His work for TheatreFirst's online season included editing a film he helped make with Lady Zen called What's in a Name, in which he was awarded four international Best Editor awards. More at [Beneuphrat.com](http://Beneuphrat.com)



## Lesley Currier

### Managing Director

is Co-Founder of Marin Shakespeare Company, with her husband Robert Currier, Artistic Director Emeritus. A graduate of Princeton University, where she won the annual Theatre Award, she has received Bay Area awards and nominations for Directing and Overall Production, is past President of the Shakespeare Theatre Association, a member of Marin Women's Hall of Fame, recipient of a Lifetime Achievement Award from Bay Area Theatre Critics Circle, and recipient of the Burbage Award for excellence in Shakespeare production worldwide. Lesley founded MSC's Shakespeare for Social Justice program and remains a dedicated Teaching Artist in prisons.



## Luisa Frascioni

### Costume Designer

returns to Marin Shakes for her 7th Season, this year as a designer. She last appeared on this stage as Isabella in *Measure for Measure*, Constance in *Three Musketeers*, Desdemona in *Othello*, Juliet in *Romeo & Juliet*, Phebe in *As You Like It*, Diana in *All's Well That Ends Well*, and Helena in *A Midsummer Night's Dream*. Other recent Bay Area credits include *White* at Shotgun Players and *Cow Pie Bingo* at Alter Theater Ensemble. She has also worked at Impact Theatre, Crowded Fire Theatre, Cal Shakes, Aurora Theatre Company and Livermore Shakespeare Festival. Thanks to her two young kids, who lend their Mama to the theatre.



## Joy Gonzales

### Prop Design

is a prop artisan based in Oakland, CA. She has a BFA in Sculpture from Cal State University Long Beach and a Technical Theatre Certificate from Diablo Valley College. She recently finished a year-long props internship at PCPA (Pacific Conservatory Theatre) and is excited to be working with Marin Shakespeare Company.



## Dawn Marie Kelley\*

### Stage Manager

grew up in Baltimore, MD. She graduated from Towson University with a Bachelor of Science in Theatrical Studies (with a minor in creative writing and film production). Since graduation she has worked as an SM, ASM, PA, and backstage theatrical crew member. Dawn has worked with a number of theater companies and festivals, including but not limited to Baltimore Shakespeare Factory, Capital Fringe (DC), Oakland Theater Project, Bay Area Children's Theater, Oregon Shakespeare Festival, The Repertory Theater of St. Louis, and Actors Theater of Louisville. She is excited to be working for the first time with Marin Shakespeare Company.



## Philippa Kelly

### Dramaturg

(she/ hers) has served for 13 years as Resident Dramaturg for the California Shakespeare Theater, and as Production Dramaturg for many regional theaters, including SF Playhouse, the Magic Theater, the Aurora, the Oregon Shakespeare Festival, Play On! Shakespeare, and many others. She has been awarded fellowships from the Fulbright, Rockefeller and Commonwealth Foundations, and grants from the California Arts Council, and the National Endowment of the Humanities. Philippa is Chair and Professor of English at the California Jazz Conservatory and also teaches in the Theatre Department at San Jose State University.



## Juliann Lathung

### Assistant Stage Manager

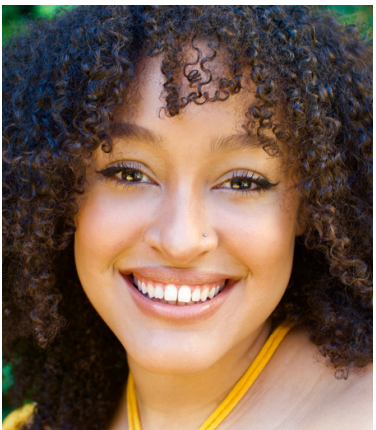
is excited to be working with Marin Shakespeare Company for the first time as an Assistant Stage Manager. Previous theatre production credits include Assistant Stage Manager and Board Operator at Central Works (Mondragola, The Museum Annex) and Assistant Lighting Designer at San Francisco Playhouse (Indecent). She is currently enrolled at San Francisco State University and is pursuing a Bachelor of Arts in Theatre Arts.



## Dave Maier

### Fight Choreography

is a prolific fight director with over 300 professional credits. He is recognized as a Master Fight Director with Dueling Arts International and is currently the resident fight director at San Francisco Opera and Oakland Theatre Project. He is a five-time recipient of the Theatre Bay Area Award for Outstanding Fight Choreography. Recent and upcoming credits include Romeo & Juliet (African American Shakespeare), King Lear and The Taming of The Shrew (Santa Cruz Shakespeare). Dave is an instructor of theatrical combat at UC Santa Cruz, San Francisco Conservatory of Music, Berkeley Rep School of Theatre, and Studio ACT.



## Storm White

### Understudy, Assistant Director

Storm is a theatre creator born and raised in Oakland, CA. Her directorial credits include CURTAIN CALL (SFSU + ZSpace), ARGENTINA (SFSU + ZSpace), and DIERDE, THE QUEER QUEEN (Aurora Theatre). Some of her performance credits include Eury in DIERDE, THE QUEER QUEEN (Aurora Theatre), Madonna and Anna Politkovskaya in PUSSY RIOT: OR Everything Is P.R. (TheatreFirst), and Sara in SANTA BARBARIANS (Fusion Theatre Project). Her thanks go to her sages and compasses, Frenchie and Margaret, for their wisdom, support, and love.



## Elena Wright

### Intimacy Director

is a Bay Area actor, educator, and fight/intimacy director. Elena has designed violence and/or intimacy for SF Playhouse, Chabot College, Left Edge Theatre, The Pear Theatre, Aurora Theatre, College of Marin, Shotgun Players, AlterTheatre, TheatreFirst, Custom Made, Sonoma State University, Landmark Musical Theatre, City Lights Theatre, Role Players Ensemble, Ross Valley Players, Marin Shakespeare Company, and Laney College among others. Elena received their MFA in acting from the University of Washington, and a BS in theatre from Northeastern University and is a teaching candidate with Dueling Arts International.



## LEADERSHIP

Kris Barrera - Technical Director  
Dameion Brown - Artist-in-Residence  
Abbey Campbell - Marketing &  
Communications Director  
Lesley Currier - Managing Director  
Robert Currier - Artistic Director Emeritus  
Elana Kepner - Education Director  
Jon Tracy - Artistic Producer of the  
Summer Season  
Alejandra Wahl - Shakespeare for Social  
Justice Manager

## ARTISTIC STAFF - 2023 SUMMER SEASON

Artist in Residence - Dameion Brown  
Casting Associate - Nick Ishimaru  
Choreography - Bridgette Loriaux  
Composing / Sound Design - Ben Euphrat  
(Hamlet), Lady Zen, (Hamlet), David C.  
Warner (Twelfth Night)  
Costume Design - Miyuki Bierlein  
(Hamlet), Bethany Deal (Twelfth Night),  
Luisa Frasoni (Hamlet)  
Directors - Bridgette Loriaux (Twelfth Night),  
Jon Tracy (Hamlet)  
Dramaturg - Phillipa Kelly  
Fight Director - Dave Maier  
Intimacy Director - Elena Wright  
Lighting Design - Jon Tracy (Hamlet),  
Stephanie Anne Johnson (Twelfth Night)  
Properties Design - Joy Gonzalez (Hamlet),  
Randy Wong-Westbrooke (Twelfth Night)  
Set Design - Nina Ball  
Set Construction - Rooster Design  
Stage Construction - Jeff Palmer  
Understudy - Storm White

## PRODUCTION - SUMMER SEASON

Assistant Technical Director - Jackson Currier  
Costume Manager - Jody Branham  
Front of House Staff - Abbey Campbell,  
Braeden Conti, Alejandro Eustaquio,  
Alexandra Fry, Nick Reulbach, Storm White  
Stage Managers - Nick Carvalho\* (Twelfth  
Night), Dawn Marie Kelley\* (Hamlet)  
Stage Manager Assistant -  
Juliann Lathug (Hamlet)  
Tech Apprentices - Oli Burrows, Miles  
Doucette, Davy Forrester

## EDUCATION

Shakespeare for Student Audiences Actors  
Sylvia Abrams-Woffsohn, Dameion Brown,  
Eliza Christine, Michelle Drexler, Oscar  
Woodrow Harper III, Melanie Kibbler,  
Sumi Narendran, Joel Ochoa  
Shakespeare for Student Audiences Artistic Team  
Elana Kepner (Director & Adaptor)  
Frank Cardinale (Stage Manager)  
Richard Pallaziol (Fight Director)  
Luisa Frasoni (Costume Designer)  
Jason Coale & Robert Currier (Set Design  
and Construction)  
Jason Coale (Lighting Designer)  
Lesley Currier (Properties Designer)  
Summer Camp Manager - Ben Prusiner  
Teaching Artists: Schools & Summer Camps  
Jackson Currier, Jamin Jollo, Maggie Lally,  
Joel Ochoa, Alejandra Wahl, Hannah  
Woolfenden, Lady Zen

## SHAKESPEARE FOR SOCIAL JUSTICE

Returned Citizens Theatre Troupe Actors  
Tony Cyprien, Aaron Daria, Zoe Gardner,  
Anthony Jefferson, Joey Kaufman, Pamela  
Anne Keane, Joey Mason, Oscar McNatt,  
Juan Carlos Meza, Richie Morris, John  
Neblett, Joey Pagaduan, William Palmer,  
Markelle Taylor, John Windham  
Teaching Artists in Prisons  
Stacey Arterburn-Johnson, Dameion, Brown,  
Lesley Currier, Suraya Keating, Holly  
Natwora, Sharon Huff Robinson, Tina  
Rutsch, Marianne Shine, Alejandra Wahl

## CAPITAL CONSTRUCTION

Architects - John Sergio Fisher, Joe Monteadora  
Contractors - Oliver & Company  
Project Manager - Janice Fetzer

## BEHIND THE SCENES

Computer Consultant - Roger Clay  
Data Base - Patron Manager, Bloomerang  
Photographers/Videographers - Bennet Dahl,  
Peter Merts, Ada More, David Wayne White,  
Jay Yamada  
Ticketing - PatronManager, Purplepass  
Web Design - Lundmark Media

**Education Programs in and after school lead thousands of elementary, middle and high school students into their hearts, onto the stage, and into the spotlight. Our programs are designed to engage and excite students of all ages. We work in partnership with public school teachers to deliver powerful relevant curriculum. We serve low-income families and some of the county's most at-risk youth, with a philosophy that every child should be able to participate regardless of the ability to pay.**

## SHAKESPEARE SUMMER CAMPS

We make Shakespeare fun! 2023 camps for students ages 5 to 19 run June 12 to August 11. Campers will enjoy: Physical games and activities, learning about and performing Shakespeare, making new friends, and skilled and caring Teaching Artists. Student actors explore Shakespeare's exciting characters, language and stories, and each camp culminates in a performance. Sign up now at [www.marinshakespeare.org/summercamps](http://www.marinshakespeare.org/summercamps) or call 415-499-4487.



## SHAKESPEARE FOR STUDENT AUDIENCES

The 2023 production of *MACBETH* featured Dameion Brown in the title role at the Center for Performing Arts, Education and Social Justice at 514 Fourth Street. Almost 1,000 students attended performances. Gratitude to the National Endowment for the Arts/Arts Midwest Shakespeare in American Communities and California Arts Council for allowing us to offer these performances free of charge to schools.

LEARN MORE AT [www.marinshakespeare.org/student-matinees/](http://www.marinshakespeare.org/student-matinees/)

## TEEN TOURING COMPANY

The Teen Touring Company is a unique opportunity for actors aged 12 – 19 to create and tour a Shakespeare play to schools, senior centers and community organizations. Students work with a professional director and dive into conservatory-style rehearsal and training in voice and text work, acting and movement. This year, we produced "Hamlet," Shakespeare's greatest tragedy, with a contemporary spin.

LEARN MORE AT [www.marinshakespeare.org/teen-touring-company/](http://www.marinshakespeare.org/teen-touring-company/)

## YEAR-ROUND CLASS OFFERINGS

Marin Shakespeare's Classes provide performing arts instruction throughout the year. We provide Creative Dramatics and Shakespeare classes at many local schools. At our new Center for Performing Arts, Education, and Social Justice, we will be offering a full array of classes for all ages.

LEARN MORE AT

[www.marinshakespeare.org/youth-classes/](http://www.marinshakespeare.org/youth-classes/)



## PROGRAM HISTORY:

We believe that access to arts, creativity and self-expression is a human right. Twenty years ago, Marin Shakespeare Company offered its first Shakespeare class at San Quentin State utilizing a groundbreaking Drama Therapy-inspired curriculum that prioritizes emotional intelligence building, self-expression, creativity, teamwork, and appreciation, our programs offer participants an opportunity to re-engage with themselves and their community in restorative, joyful ways. Many participants report this program has helped inspire important and positive change. Since 2003, the program has served 14 California State Prisons and Alameda Juvenile Hall. In addition to Shakespeare, we facilitate programs in Autobiographical Story-telling, Acting for Veterans, Drama for Re-entry where participants "rehearse" how they will "act" when they return home, and we are developing a curriculum in Anger Management.

To build bonds between communities and offer opportunities for cross-cultural exchange, we facilitate Workshops at San Quentin where outside guests and program participants work collaboratively to explore Shakespearean and human themes. Thousands of community members have attended culminating performances in prisons, offering support and bearing witness to the healing work. The Returned Citizens Theatre Troupe offers actors who have survived incarceration the opportunity to continue creative exploration while educating audiences on the impacts of mass incarceration.

Today, five prisons we have worked in have been permanently shut down, and nationally, rates of incarceration are falling.

## SOME FACTS:

- The U.S. incarcerates more people than any other country on earth.
- With 5% of the world's population, we have 25% of the world's incarcerated citizens.
- In 1973, we incarcerated 315,000 people - Today, it's about 1.8 million, down from a high of 2.2 million.
- 21 of California's 36 prisons have been built since the early 1980's.
- One out of every four Black males born today will end up in jail or prison if things do not change.
- The rate of incarceration of women is rising twice as fast as that of men.

## BEYOND THE FACTS:

What the facts don't articulate is the humanity. When you join us inside a prison for a performance of Shakespeare, original theater, or for a Workshop you come to recognize that the people we incarcerate are just that - people. Each person is unique, each is flawed, and each has gifts. Most have experienced serious childhood trauma. Many have honed skills of resilience, patience and self-reflection. Racism, discriminatory policing, socio-economics, greed, and the lack of investment in communities of color are equally as responsible for mass incarceration as the choices made by individuals. We are all victims of a system of mass incarceration that continues to destroy healthy communities, promote disunity, create barriers to all children realizing their full potential, and weaken our nation.

## WHAT THEATRE CAN DO:

Theater inside prisons heals in many ways. Whether playing one of Shakespeare's great roles or re-telling their personal stories in creative and dramatic ways, participants discover the power of their words and the impact they have on an ensemble - and their community. We have seen participants drop out of gangs, enroll in GED and college courses, and reunite with family members. They touch base with their true selves, interact deeply with others from different backgrounds, and learn that they can play roles other than "convict" or "criminal." They feel valued, uplifted, and that they have a voice.

Thank you for joining us in "Playing for Good."

## **CENTER FOR PERFORMING ARTS, EDUCATION, AND SOCIAL JUSTICE**

**After 7 years of planning, fundraising, and construction, Marin Shakespeare Company has finally opened its Center for Performing Arts, Education, and Social Justice at 514 Fourth Street in downtown San Rafael.**

**The Center boasts a 165-seat theatre in a three-quarter thrust configuration, with seating on three sides -- similar to Shakespeare's playhouses. It has an ample lobby which will function as a 40-seat Cabaret performance venue, a large Classroom/Rehearsal Hall, dressing rooms, backstage greenroom space, a Catering Kitchen/Concessions area, and Administrative offices. The large attic provides storage space for costumes, props, and scenery, a luxury for any theatre company.**

**Marin Shakespeare Company expects to fill the Center with performances, classes, and events and welcomes everyone to come explore the new Center.**

**Donations are still being accepted: for \$1,500 to \$2,500 you can dedicate a theatre chair; for \$5,000 your name will be permanently displayed on the Donor Wall; and there are many opportunities for Naming Rights for different parts of the new Center.**

**Mostly, though, MSC wants everyone to come to be creative, learn, and build community. We are delighted to be able to provide this space for gathering to explore our shared humanity.**



# ASHLAND TRIP 2023

THURSDAY SEPTEMBER 28 – SUNDAY  
OCTOBER 1, 2023

2023 PLAYS TO  
CHOOSE FROM:

"The Three Musketeers"

"Where We Belong"

"Twelfth Night"

"Rent"

"Romeo and Juliet"

SIGN UP NOW!

**NATIONAL ENDOWMENT FOR THE ARTS**  
PRESENTS



**SHAKESPEARE**  
IN AMERICAN COMMUNITIES

The National Endowment for the Arts in partnership with Arts Midwest presents Shakespeare in American communities. **MARIN SHAKESPEARE COMPANY** is one of 40 professional theater companies across the nation selected to perform a Shakespeare play with a professional team of actors for middle-and-high-schools and conduct related education for students. In addition, the company was one of seven organizations selected to engage youths within the juvenile justice system with the works of Shakespeare through theater education programs.

We thank the NEA and Arts Midwest for their support of **HAMLET** and Shakespeare instruction for all youth.



# **SPECIAL THANKS**

**Dick and Diane Blackman**

**Lenox and Kili Currier**

**Robert Currier**

**Dominican University of California**

**Frey Winery**

**Marin Sanitary Service**

**Peter Parish**

**Aurora Theatre Company**

**TheatreFIRST**

**Costco**

**Evelyn and Jacob Tracy**



**We are so grateful to those who have contributed to Marin Shakespeare Company's ability to survive and thrive through the pandemic. We applaud the following generous donors who made gifts of \$100 or more between May 16, 2019 and June 15, 2023. Every gift of any amount is greatly appreciated!**

## **ORGANIZATIONAL DONORS**

Ann and Gordon Getty Foundation  
Bank of Marin  
Buck Family Foundation of the Marin Community Foundation  
California Arts Council  
California Covid Relief Grants  
California Department of Corrections and Rehabilitation  
California Humanities  
California Venues Grant  
Crescent Porter Hale Foundation  
Drake Terrace  
The Etrog Fund #1 of the Jewish Communal Fund  
Fenwick Foundation  
First Federal Savings & Loan  
Frances K. and Charles D. Field Foundation  
Giving Marin  
Hall Capital Partners  
Hitz Foundation  
Living History Centre Fund  
Marin Cultural Association CARES  
Mission San Rafael Rotary  
National Endowment for the Arts  
Oramax Fund  
The Presbyterian Church of Novato  
Kenneth Rainin Foundation  
RIGHT Grant  
Schwemm Family Foundation Duchess Award  
Shakespeare in American Communities:  
National Endowment for the Arts in partnership with Arts Midwest  
Shippey Foundation  
Shuttered Venues Operating Grant  
Stricker Philanthropic Fund  
The Larson Legacy  
Westamerica Bank  
Yerba Buena Center for the Arts

### **Matching Gifts**

Adobe  
AXA Equitable Foundation  
The Capital Group Companies Charitable Foundation  
Disney Corporation  
Hewlett Foundation

## **INDIVIDUAL DONORS**

### **Shakespeare Circle**

Anonymous  
E. Craig Moody  
The Robinett Family  
Diane Rubinstein  
Tom Swift  
Amanda Weitman  
Sandra Yoffie

### **Playwright's Circle**

Clint Bajakian and Deniz Ince  
Kathryn Braeman  
Morrow Cater and Peter Scheer  
The Ronald Clyman Family  
Tracy Ferron  
Jon and Dodi Friedenberg  
James J. Gallagher, Ph.D.  
Andrew and Linda Gordon  
Alan and Susan Gregory  
Grace Hughes  
Virginia Stevens-Johnson  
Sheila McClear  
Tom and Nancy Oblatz  
Laura Schisgall and Stan Sterenberg  
Paul and Sandy Zuber

### **Director's Circle**

Baele Family Trust  
Diane Barnes  
Allen and Lynn Barr  
Brittney Bottorff  
King Cahill Family Fund  
Robert Church and Cathy Bristow  
Edie & Bill Dagley  
Joanne De Phillips  
Jonathan DeYoe  
Five Arts Fund  
Diana Gay-Catania and David Catania  
Libby Cater Halaby  
Frances Lynne Hansen  
Tom and Faye Hendricks  
Susan Howell  
Pam and Dennis Joyce  
John and Linda Kay  
Delia & Marvin Lang  
Natalie Lipsett



## INDIVIDUAL DONORS

### Director's Circle, continued

Joan Lisetor  
Elizabeth Jane Mahoney Charitable Fund  
Natalie Martina  
Christina Mazzola  
ML Family Charitable Fund  
Laurean Nardone  
Gabriele Ondine  
Amy and James Ramsey  
Zoe Reinsch  
Sharon Robinson  
Gretchen Saeger  
Joan Saxton  
Michael and Gretchen Schnitzer  
Cherie Sorokin  
Ford and Suto Family Fund  
Chris Timossi and Lori Viti  
Phyllis Thelen  
The Weisman Foundation/Jay and Judy Nadel  
Mary Welch

### Star Performers

Joyce Mallette Bailey  
Robert and Irene Belknap  
Brittney Bottorff  
Howard and Janna Brownstein  
Michael Burik  
Juliana Carlucci  
Kim Bromley and David Carson  
Ron Clyman and Francoise Mauray  
Paul Cohen and Nancy Masters  
Christina Crow  
Joanne De Phillips  
Doug and Michele Dillard Charitable Fund  
Stephanie Donick  
Robert Doris and Mary Sauer  
Allison Doyle  
Marilee Eckert  
Annette Faidi  
Tom and Faye Hendricks  
Abby Hoffman  
Lawyers for One America  
Kim Leung  
William Marshall  
Justin McCarthy  
Prof. Patricia and Steve McMahon  
Fred and Phyllis Mervine  
Wendy Miley  
Susan Mooney  
Steve Oliver  
Josh H. Oliver-Azar Zavvar Philanthropy Fund  
Gabriele Ondine

### Star Performers, continued

Dyan Pike  
Kirsten Polsky  
Stuart Rabinowitsh  
Miyoko Schinner  
John Schlag  
Cathy Schwemm  
Jerome Solberg  
PTaines/CHyman Charitable Fund  
Ronald Turiello  
Diana Vine  
Margaret Wallace and Cory Bytof  
Roger Weatherford  
Toni K. Weingarten Fund  
Donna and Larry Whelan  
Mordechai Winter

### Lead Players

Eugene R. Alward  
Jay R. Beasley, Jr.  
Peter Bingham  
Eugene and Myrna Binnall  
Alexandra Bizoni  
Linda Boghrati  
Nancie Bottmeyer  
Anthony Brenner  
Anthony & Mary Lee Bronzo  
Lynne Carmichael  
Anne Cavanaugh  
Jon Ching  
Chadwick W. Christine III & Cynthia T. Chin  
Christine Comaford  
Jeff Craemer  
Eric & Karen Davidson  
Sharon Doyle  
Thomas and Robyn Geissler  
David George  
Malcolm Gissen and Judith Cohen  
Larry Goldberg  
Helen Gordon  
Steve Gregory  
Francie Hansen  
Tom and Faye Hendricks  
Barbara Husak  
linda Ivory  
Jill Jacobi  
Julie Jacobs  
William and Emily Johnstone  
Bruce Kerns and Candis Cousins  
David Leonard  
Anthony Leuin and Jean Bertrand

## INDIVIDUAL DONORS

### Lead Players, continued

Beth Levinson and Tom Allen  
Mary Dell Lucas  
Mia and Jeff Ludlow  
Laurie Nardone  
Chris and Marie Newton  
Mark and Kay Noguchi  
Gary and Dona Novack  
Barton O'Brien  
Whitney and Dennis O'Neill  
Ronald Oliveira  
Larry and Diane Rosenberger  
Scot Russell  
Nancy S. Rutsch  
Ed and Diane Ryken  
Cynthia Schmidt  
Gabriela Schneider  
Jean Schulz  
Randolph and Carol Selig  
Susan Shay  
Anju Sidhu  
John Simpson  
Lila Smith  
Jerome Solberg  
Russell and Eve Wirth

### Supporting Cast

Susan Adamson  
Stephanie Ahlberg  
Vanessa and Matthew Alexander  
Gary Anspach  
Jo Anne Appel  
Craig Apregan  
Joseph Bailitz  
Steve and Janice Barlow  
Christopher and Catherine Barnes  
Craig & Gail Barton  
Gerry and Don Beers  
Allen L. Bernes  
Francesca Bertone  
Anthony Leuin and Jean Bertrand  
Renee and Aldo Billingslea  
Peter Bingham  
Dick and Diane Blackman  
Elyse Blatt  
Michael Barnett  
Aviva and Karl Boedecker  
Linda Boghrati  
Larry and Barbara Brauer  
Paul & Ann Brenner  
Larry Brewster

### Supporting Cast, continued

Greg Brockbank and Esther Wanning  
Kim Bromley and David Carson  
Anhony and Mary Lee Bronzo  
Aaron and Jody Brown  
Jim Allen  
Lois Brubeck  
Caroline Buckles  
Garrick Byers  
Libby Byers  
Dennis and Hazel Cabrera  
Magdalena Cabrera  
Brian Calder  
William and Priscilla Cameron  
Dipa Cappelen  
Susan Charlton  
John Chesley  
Jon Chevalier  
Marsha Chevalier  
Patrick Woods  
Ilkcan Cokgur and Haluk Ulubay  
Mike and Pamela Cole  
Congregation Ner Shalom  
Linda Connelly  
Justine Coopersmith  
Philip Crawford  
Jane Curtis  
Sharon and Ed Cushman  
John and Betsey Cutler  
Robert and Marcia Dalva  
Tarun Dharia  
Maria Dichov  
Fredric and Victoria Divine  
Robert K. Dolgoff and Margarita A. Nicol  
Jim & Sheryl Draper  
Patricia Dwelley  
Tammy Edmonson  
Susan Ellenberg  
Michele Elliott  
Chuck Stuckey and Donna Eng  
Lucille Herger Ezell  
Elisabeth Fall  
Ally and Drew Sievers  
Nancy Farese  
Shelley & Jeff Finci  
Lauri Flynn  
Sharon Fox  
Frankel Weaver Living Trust  
Juliana Frick  
Joan Garrett  
Morgan Garrison

## INDIVIDUAL DONORS

### Supporting Cast, continued

Mervin and Gail Giacomini  
Robert Goldsby  
Tamara Goldsmith  
Ronda Gotti  
The Stephanie R. Graham Charitable Gift Fund  
Sidney Sall and Deborah Gray  
Haley Green  
Rosemary Greenberg  
Gordon and Gini Griffin  
Carol-Joy Harris and Bill Davis  
Simon Harrison  
Lt. Col. James R. Hastings  
Vivian Haussermann  
Jean Hegland  
Paul and Janet Heineken  
Sheila Hershon  
David Hirzel and Alice Chochran  
Abby Hoffman  
Ruth Holand  
June Holmes  
Catherine Horton  
Kaye Howe  
Donald Humphreys  
Julie and Seth Jacobs  
Hermia James  
Jeffrey R. Smith  
Brian Jennings  
Deirdre Katt  
Sarah Katz  
Jane and Ken Kershner  
Ruth Kirschner  
Karen Klein  
Lyn and Don Klein  
David Knepler and Karen Koenig  
Brian Knight  
Kathleen Köster  
Jane Kroesche  
Jane Kuka  
Mark Kushner  
Amy Lardner  
Dianne Leger  
Eric & Diane Leichter  
Vic and Linda Levi  
Lois and Paul Levine  
Margaret Levitt  
Heather Liston  
Rory Little  
Robert and Edith Lockhart  
David Long  
Shirley Long

### Supporting Cast, continued

Joan Lubamersky  
Kathleen Lucido  
Martin and Ruth Malkin  
Mary O'Mara  
Robert and Patti Marsh  
David Marshall  
Clare McCamy  
Barbara McDonald  
Nathaniel McIntyre  
Steve and Kay McNamara  
John & Stephanie Mendel Fund  
Katherine Merriman  
Robert Mickel and Marilyn Zimmerman  
Leslie Miller  
Lisa Monroe  
Jarion and Anni Monroe  
Everett and Julia Moore  
Amy Morse and Keith O'Brien  
Phoebe Moyer  
Susan Mulvey  
June Murray  
Gloria Neumeier  
Gerard Notario  
Carole O'Neill  
Dennis and Whitney O'Neil  
Whitney M. O'Neill  
Diane Ongaro  
Rozell Overmire  
Betty Pagett  
John Palmer  
Rebecca Pauling  
Jim and Susan Perero  
John Petrovsky  
Judith Pomeroy  
Jessica and Jack Powell  
Cameron Price  
Steve and Tracy Price  
Donna Annette Prlich  
Madeleine Provost  
Michelle Quinn  
Richard Quinn  
Daniel Rabinowitz  
Bill and Gail Reid  
John Henry Reilly & Lucille L. Allison  
John Rengstorff  
William and Barbara Rich  
Kimberly Ridgeway  
Ellen Mary Roggemann  
Peter Roos  
Chris Hardman

## **INDIVIDUAL DONORS**

### **Supporting Cast, continued**

Jay Rosenberger  
Alex & Tinka Ross  
Rob Runett  
Ed and Diane Ryken  
Renee Rymer  
Elaine Stone  
Lorna Sass  
Jennifer Gennari  
Jeff Schneider  
Pamela Sebastian  
Sally Seymour  
Pamela Shandrick  
Ann Shaw  
David Silber  
Matthew Purdon and Liz Sklar  
Susan and Joel Sklar  
Sandy Smith  
Clara Solvason  
Walt and Anna Spevak  
Tara Steele  
Thomas Stephens  
Stevens Family  
Ed and Marge Summerville  
Linda Swanson  
Katherine Tallis  
Mercedes ShinoharaTaylor  
Valerie Taylor  
Glenn Thompson  
Evelyn Topper & Allan Jackman  
Vanessa Topper  
Eric .J Torney  
Helena Troy  
Douglas and Arlene Turner  
Virginia Turner  
Linda Vallee  
Nancy Van Horn  
Vito and Katy Vanoni  
Lorraine Voskanian  
Janet Wade  
Patricia Wade  
Ross Walker & Charlotte Tonge  
Margaret Wallace  
Andrea Wang  
Deborah Ward  
Jim and Janet Ward  
J Michael Watt and Eileen Weatherman  
Karen West and Chris Warner  
John and Sallyanne Wilson  
Sandra Yates  
Virginia Yee  
Nancy Zeravich

## **CAPITAL CAMPAIGN DONORS**

### **Gifts of \$5,000+**

Anonymous (2)  
Clint and Deniz Bajakian  
Bothin Foundation  
Matt and Lynn Brown  
Janna and Howard Brownstein  
Bill and Priscilla Cameron  
Loren and Rachel Carpenter  
Compass Marketing  
Lesley and Robert Currier  
Nate Currier  
Robert and Marcia Dalva  
Drusilla Davis  
David Donovan and Tina Rutsch  
Martha and Tony Eason  
Fenwick Foundation  
Doug and Jane Ferguson  
James J., Gallagher, Ph. D.  
Diana Gay-Catania and David Catania  
Deborah Gray and Sidney Sall  
Alan and Susan Gregory  
Libby Cater Halaby  
Evan Hirsch  
John and Grace Hughes  
Dennis and Pam Joyce  
Bob Kaliski  
Don and Lyn Klein  
Delia and Marvin Lang  
Lion's Pride Foundation  
The Joseph and Vera Long Foundation  
Shirley Long  
Marcia Lucas  
Nancy Lumer  
Marin Community Foundation  
Andy and Ann Mathieson  
Sheila McClear  
McKinsey & Company  
E. Craig and Kathy Moody  
National Philanthropic Trust  
Jane Papish  
The Pittsburgh Foundation  
Lynn Oldham Robinett and Carl Robinett  
Rosenberger Family Fund  
Fred Ruhland  
Dick and Daisy Sagabiel  
Laura Schisgall and Stan Sterenberg  
Phyllis Thelen  
Amanda Weitman  
Sandra Yoffie  
YPO Gold San Francisco Chapter  
The Zuber Family

## CAPITAL CAMPAIGN DONORS, continued

### Gifts of \$100 - \$4,999

Susan Adamson  
Stephanie Ahlberg  
Vanessa and Matthew Alexander  
Gary Anspach  
Jo Anne Appel  
Craig Apregan  
Joseph Bailitz  
Steve and Janice Barlow  
Christopher and Catherine Barnes  
Craig & Gail Barton  
Gerry and Don Beers  
Allen L. Bernes  
Francesca Bertone  
Anthony Leuin and Jean Bertrand  
Renee and Aldo Billingslea  
Peter Bingham  
Dick and Diane Blackman  
Elyse Blatt  
Michael Barnett  
Aviva and Karl Boedecker  
Linda Boghrati  
Larry and Barbara Brauer  
Paul & Ann Brenner  
Larry Brewster  
Greg Brockbank and Esther Wanning  
Kim Bromley and David Carson  
Anhony and Mary Lee Bronzo  
Aaron and Jody Brown  
Jim Allen  
Lois Brubeck  
Caroline Buckles  
Garrick Byers  
Libby Byers  
Dennis and Hazel Cabrera  
Magdalena Cabrera  
Brian Calder  
William and Priscilla Cameron  
Dipa Cappelen  
Susan Charlton  
John Chesley  
Jon Chevalier  
Marsha Chevalier  
Patrick Woods  
Ilkcan Cokgur and Haluk Ulubay  
Mike and Pamela Cole  
Congregation Ner Shalom  
Linda Connelly  
Justine Coopersmith  
Philip Crawford  
Jane Curtis

### Gifts of \$500 - \$4,999, continued

Sharon and Ed Cushman  
John and Betsey Cutler  
Robert and Marcia Dalva  
Tarun Dharia  
Maria Dichov  
Fredric and Victoria Divine  
Robert K. Dolgoff and Margarita A. Nicol  
Jim & Sheryl Draper  
Patricia Dwelley  
Tammy Edmonson  
Susan Ellenberg  
Michele Elliott  
Chuck Stuckey and Donna Eng  
Lucille Herger Ezell  
Elisabeth Fall  
Ally and Drew Sievers  
Nancy Farese  
Shelley & Jeff Finci  
Lauri Flynn  
Sharon Fox  
Frankel Weaver Living Trust  
Juliana Frick  
Joan Garrett  
Morgan Garrison  
Mervin and Gail Giacomini  
Robert Goldsby  
Tamara Goldsmith  
Ronda Gotti  
The Stephanie R. Graham Charitable Gift Fund  
Sidney Sall and Deborah Gray  
Haley Green  
Rosemary Greenberg  
Gordon and Gini Griffin  
Carol-Joy Harris and Bill Davis  
Simon Harrison  
Lt. Col. James R. Hastings  
Vivian Haussermann  
Jean Hegland  
Paul and Janet Heineken  
Sheila Hershon  
David Hirzel and Alice Chochran  
Abby Hoffman  
Ruth Holand  
June Holmes  
Catherine Horton  
Kaye Howe  
Donald Humphreys  
Julie and Seth Jacobs  
Hermia James  
Jeffrey R. Smith

## CAPITAL CAMPAIGN DONORS, continued

### Gifts of \$100 - \$4,999, continued

Brian Jennings  
Deirdre Katt  
Sarah Katz  
Jane and Ken Kershner  
Ruth Kirschner  
Karen Klein  
Lyn and Don Klein  
David Knepler and Karen Koenig  
Brian Knight  
Kathleen Köster  
Jane Kroesche  
Jane Kuka  
Mark Kushner  
Amy Lardner  
Dianne Leger  
Eric & Diane Leichter  
Vic and Linda Levi  
Lois and Paul Levine  
Margaret Levitt  
Heather Liston  
Rory Little  
Robert and Edith Lockhart  
David Long  
Shirley Long  
Joan Lubamersky  
Kathleen Lucido  
Martin and Ruth Malkin  
Mary O'Mara  
Robert and Patti Marsh  
David Marshall  
Clare McCamy  
Barbara McDonald  
Nathaniel McIntyre  
Steve and Kay McNamara  
John & Stephanie Mendel Fund  
Katherine Merriman  
Robert Mickel and Marilyn Zimmerman  
Leslie Miller  
Lisa Monroe  
Jarion and Anni Monroe  
Everett and Julia Moore  
Amy Morse and Keith O'Brien  
Phoebe Moyer  
Susan Mulvey  
June Murray  
Gloria Neumeier  
Gerard Notario  
Carole O'Neill  
Dennis and Whitney O'Neil  
Whitney M. O'Neill

### Gifts of \$500 - \$4,999, continued

Diane Ongaro  
Rozell Overmire  
Betty Pagett  
John Palmer  
Rebecca Pauling  
Jim and Susan Perero  
John Petrovsky  
Judith Pomeroy  
Jessica and Jack Powell  
Cameron Price  
Steve and Tracy Price  
Donna Annette Prlich  
Madeleine Provost  
Michelle Quinn  
Richard Quinn  
Daniel Rabinowitz  
Bill and Gail Reid  
John Henry Reilly & Lucille L. Allison  
John Rengstorff  
William and Barbara Rich  
Kimberly Ridgeway  
Ellen Mary Roggemann  
Peter Roos  
Chris Hardman  
Jay Rosenberger  
Alex & Tinka Ross  
Rob Runett  
Ed and Diane Ryken  
Renee Rymer  
Elaine Stone  
Lorna Sass  
Jennifer Gennari  
Jeff Schneider  
Pamela Sebastian  
Sally Seymour  
Pamela Shandrick  
Ann Shaw  
David Silber  
Matthew Purdon and Liz Sklar  
Susan and Joel Sklar  
Sandy Smith  
Clara Solvason  
Walt and Anna Spevak  
Tara Steele  
Thomas Stephens  
Stevens Family  
Ed and Marge Summerville  
Linda Swanson  
Katherine Tallis  
Mercedes Shinohara Taylor

## CAPITAL CAMPAIGN DONORS, continued

### Gifts of \$100 - \$4,999, continued

Valerie Taylor  
Glenn Thompson  
Evelyn Topper & Allan Jackman  
Vanessa Topper  
Eric .J Torney  
Helena Troy  
Douglas and Arlene Turner  
Virginia Turner  
Linda Vallee  
Nancy Van Horn  
Vito and Katy Vanoni  
Lorraine Voskanian  
Janet Wade  
Patricia Wade  
Ross Walker & Charlotte Tonge  
Margaret Wallace  
Andrea Wang  
Deborah Ward  
Jim and Janet Ward  
J Michael Watt and Eileen Weatherman  
Karen West and Chris Warner  
John and Sallyanne Wilson  
Sandra Yates  
Virginia Yee  
Nancy Zeravich

### IN-KIND GIFTS

101 Surf Sports  
Ace Hardware  
Angela Curley  
Arizmendi Bakery  
Ashland Springs Hotel  
Asian Art Museum  
Barbara Truong  
Bette's Oceanview Diner  
Book Passage  
Brie Eley  
Cal Skate  
Carolyn Jones  
Charlotte DuBois  
Cheesecake Factory  
Comforts  
Corinne Swall  
CostCo  
D'Lynnes Dancewear  
Dashe Cellars  
Donald Violin  
Dorallen Davis  
Drake's Brewing Company

### In-Kind Gifts, continued

Elsa L. Inc.  
Freight and Salvage  
Frey Vineyard  
Gott's Roadside  
Hot Cookie  
In-N-Out Burger  
Janet Montecalvo  
Jim Bean  
John Parulis  
Kabuki Springs & Spa  
Lagunitas Brewing Company  
Lawrence Hall of Science  
Malibu Wine Safari  
Marin Center & Marin County Fair  
Marin Sanitary Service  
Marin Symphony  
Mary St Pierre  
McInnis Park Golf Center  
Michele & Greg Mullin  
Pier 39  
Planet Granite  
Rubicon Bakers  
Rubio's Restaurant  
San Francisco Opera  
Scandia Family Fun Center  
Smuin Ballet  
Sol Food  
Sorella Caffè  
Spirit Works  
Tahoe Donner  
The Oakland A's  
Tina Rutsch  
Total Wine & More  
Vichy Springs Resort  
YMCA of Marin